

Catalogue

60HZ

4 INCH SUBMERSIBLE PUMPS

Small-scale Water Supply



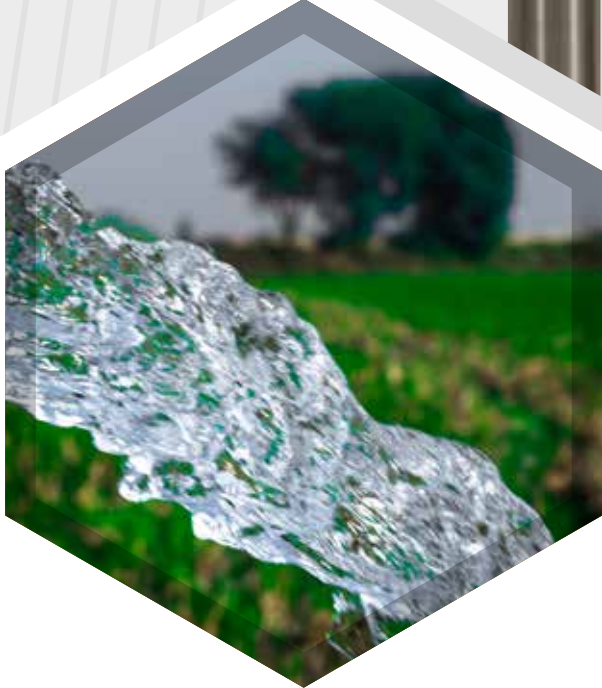


Our first principle is: "Absolute Quality"

It is always a part of our service policy to maximize customer satisfaction.

We know very well that being a trusted partner is not an easy process.

Our quality standards for our manufacturing, sales and after-sales services have been audited in accordance with the requirements and certified by authorized institutions. For this reason, Tork has the required ISO 9001:2015 Quality Management Systems Certifications and CE Attestation of Conformity Certifications.



60HZ
4 INCH SUBMERSIBLE PUMPS
Small-scale Water Supply

4 INCH SUBMERSIBLE PUMPS

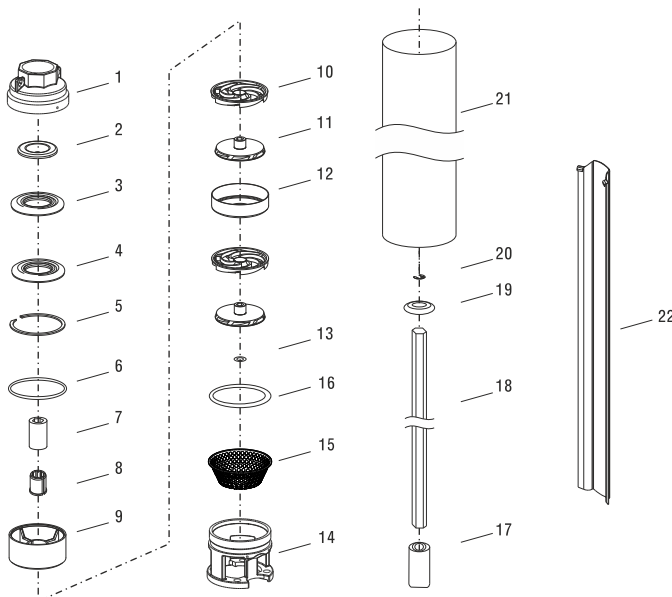
Small-scale Water Supply

60HZ



- Capacity up to 24 m³/h
- Maximum Total Head 472 m.
- Maximum water temperature 35 °C
- Max. outer diameter 98 mm (Inc. cable guard)
- Maximum tolerable sand content 50g/m³
- Discharge Connection >1¼", 1½", 2"
- Long life and easy installation
- Connection complying NEMA standards

4" Submersible Pumps Parts & Materials

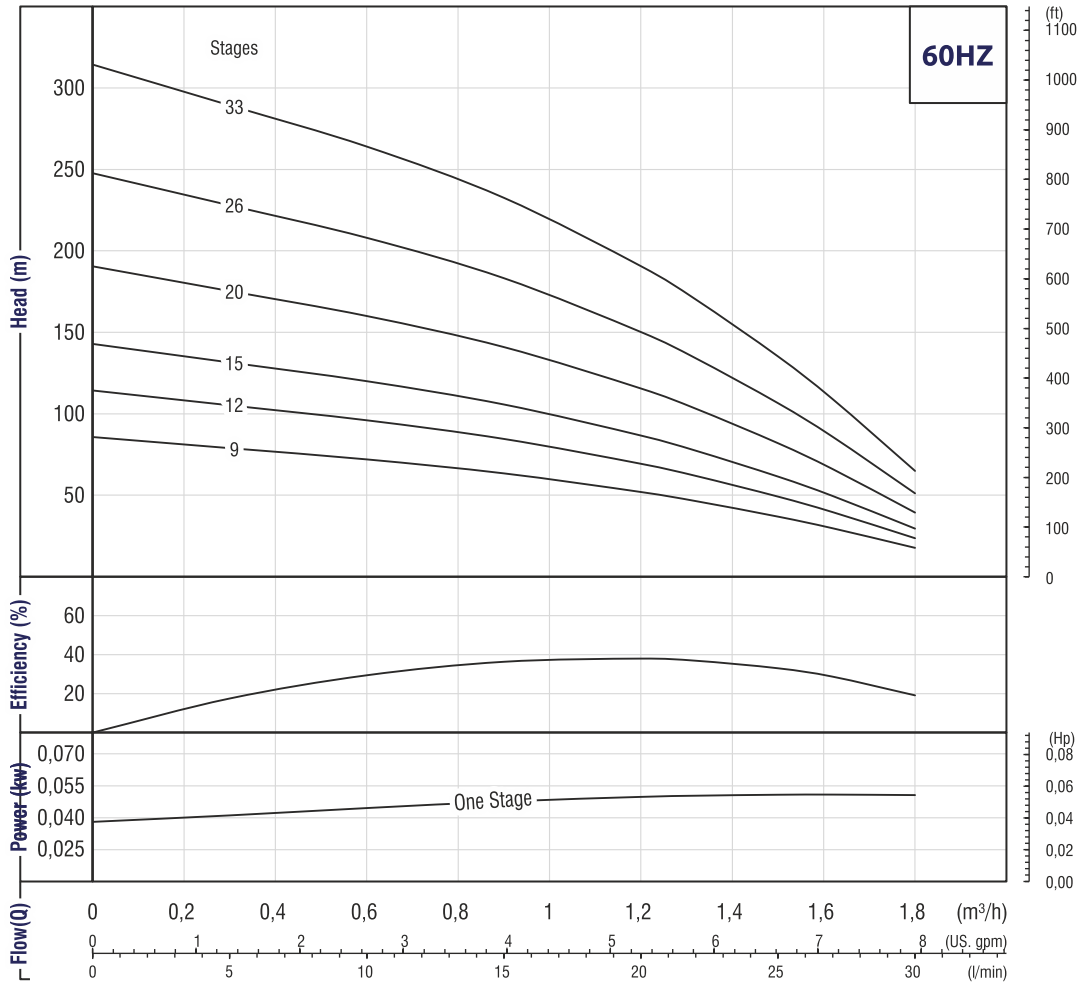


No	Part Name	Material
1	Discharge Head	Casting Stainless Steel (AISI 304)
2	Valve Disc	Stainless Steel (AISI 304)
3	Valve Seat Retainer	Stainless Steel (AISI 304)
4	Valve Seat	Stainless Steel (AISI 304)
5	Valve Locking Ring	Stainless Steel (AISI 304)
6	Adapter Ring	Noryl
7	Bushing	Noryl
8	Bearing Spacer	Polyurethane
9	Valve Housing	Noryl
10	Diffuser	PC, 20% Glass Fiber Reinforced, Natural
11	Impeller	Noryl
12	Diffuser Casing	Stainless Steel (AISI 304)
13	Shim	Stainless Steel (AISI 304)
14	Suction Case	Stainless Steel (AISI 304)
15	Strainer	Stainless Steel (AISI 304)
16	O-ring	Rubber
17	Coupling	Stainless Steel (AISI 316)
18	Shaft	Stainless Steel (AISI 420)
19	Washer	Stainless Steel (AISI 304)
20	Shim	Stainless Steel (AISI 304)
21	Pump Casing	Stainless Steel (AISI 304)
22	Cable Guard	Stainless Steel (AISI 304)

95 RN 01

4 Inch Submersible Pumps (60 Hz)

6 Vanes / 2900 Rpm (CCW) / 98mm Diameter / BSP - NPT 1¼" Outlet Connection Diameter / 11 mm Shaft Diameter



Due to continuous improvement in design we reserve the right to amend specifications or data without prior notice.

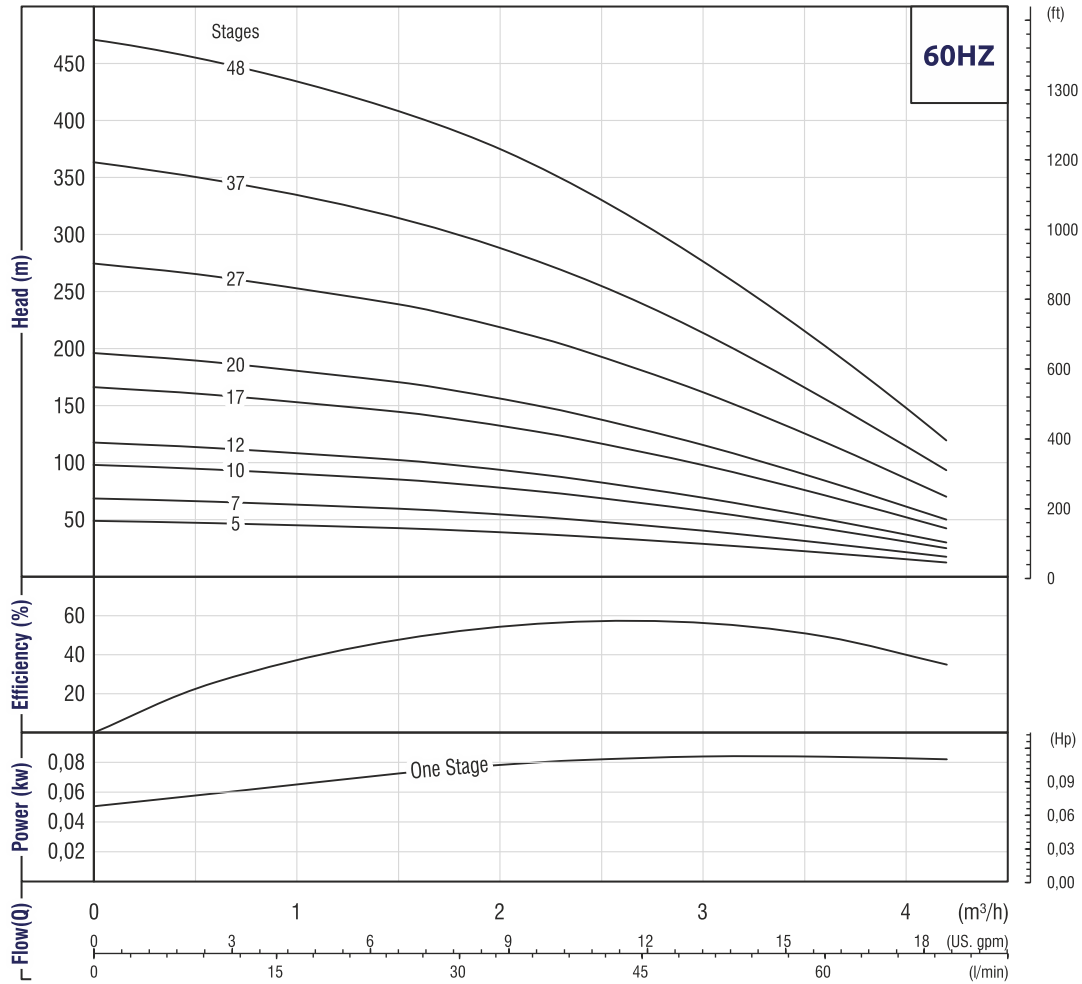
Technical Data

Pump Code	Stage	Motor Power		Length mm	Weight kg	m³/h l/min	Head (m)								
		HP	kW				0	0,3	0,6	0,9	1,2	1,3	1,5	1,6	1,8
							0	5	10	15	20	22	25	27	30
95 RN 01 / 09	9	0,5	0,37	309	3,1	Head (m)	87	80	73	64	53	47	38	31	19
95 RN 01 / 12	12	0,5	0,37	363	3,6		116	107	97	86	71	63	51	41	25
95 RN 01 / 15	15	0,75	0,55	415	4,1		143	132	120	106	87	77	61	50	30
95 RN 01 / 20	20	1	0,75	504	4,9		191	176	161	142	116	104	83	67	40
95 RN 01 / 26	26	1,5	1,1	648	5,8		248	229	209	184	151	135	107	87	52
95 RN 01 / 33	33	2	1,5	803	8,3		316	291	266	234	192	172	137	110	66

95 RN 02

4 Inch Submersible Pumps (60 Hz)

7 Vanes / 2900 Rpm (CCW) / 98mm Diameter / BSP - NPT 1 1/4" Outlet Connection Diameter / 11 mm Shaft Diameter



Due to continuous improvement in design we reserve the right to amend specifications or data without prior notice.

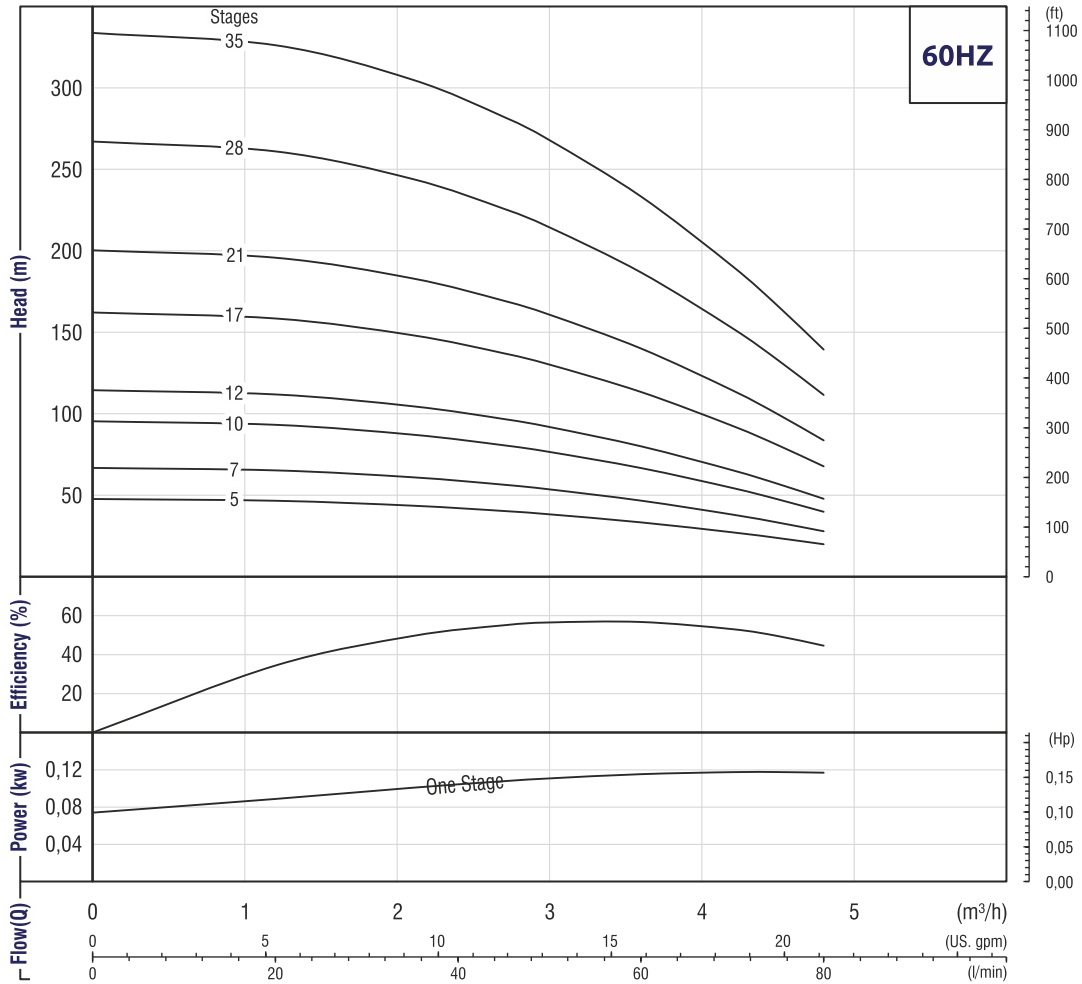
Technical Data

Pump Code	Stage	Motor Power		Length mm	Weight kg	m³/h l/min	0	0,6	1,5	1,8	2,1	2,4	3,0	3,6	4,2
		HP	kW				0	10	25	30	35	40	50	60	70
95 RN 02 / 05	5	0,5	0,37	234	2,5	Head (m)	50	48	44	42	39	36	30	22	14
95 RN 02 / 07	7	0,5	0,37	268	2,8		70	67	61	58	55	51	42	31	19
95 RN 02 / 10	10	0,75	0,55	321	3,3		98	94	85	81	76	71	58	42	25
95 RN 02 / 12	12	1	0,75	355	3,6		118	113	103	98	92	86	70	51	31
95 RN 02 / 17	17	1,5	1,1	443	4,4		167	160	146	139	131	121	99	72	43
95 RN 02 / 20	20	2	1,5	494	4,9		196	188	171	163	153	142	116	85	50
95 RN 02 / 27	27	3	2,2	653	6,0		276	264	240	229	215	200	163	120	72
95 RN 02 / 37	37	4	3	856	9,0		365	350	318	303	285	265	216	158	95
95 RN 02 / 48	48	5	3,7	1.083	10,8		472	452	411	391	368	342	279	204	122

95 RN 03

4 Inch Submersible Pumps (60 Hz)

6 Vanes / 2900 Rpm (CCW) / 98mm Diameter / BSP - NPT 1 1/4" Outlet Connection Diameter / 11 mm Shaft Diameter



Due to continuous improvement in design we reserve the right to amend specifications or data without prior notice.

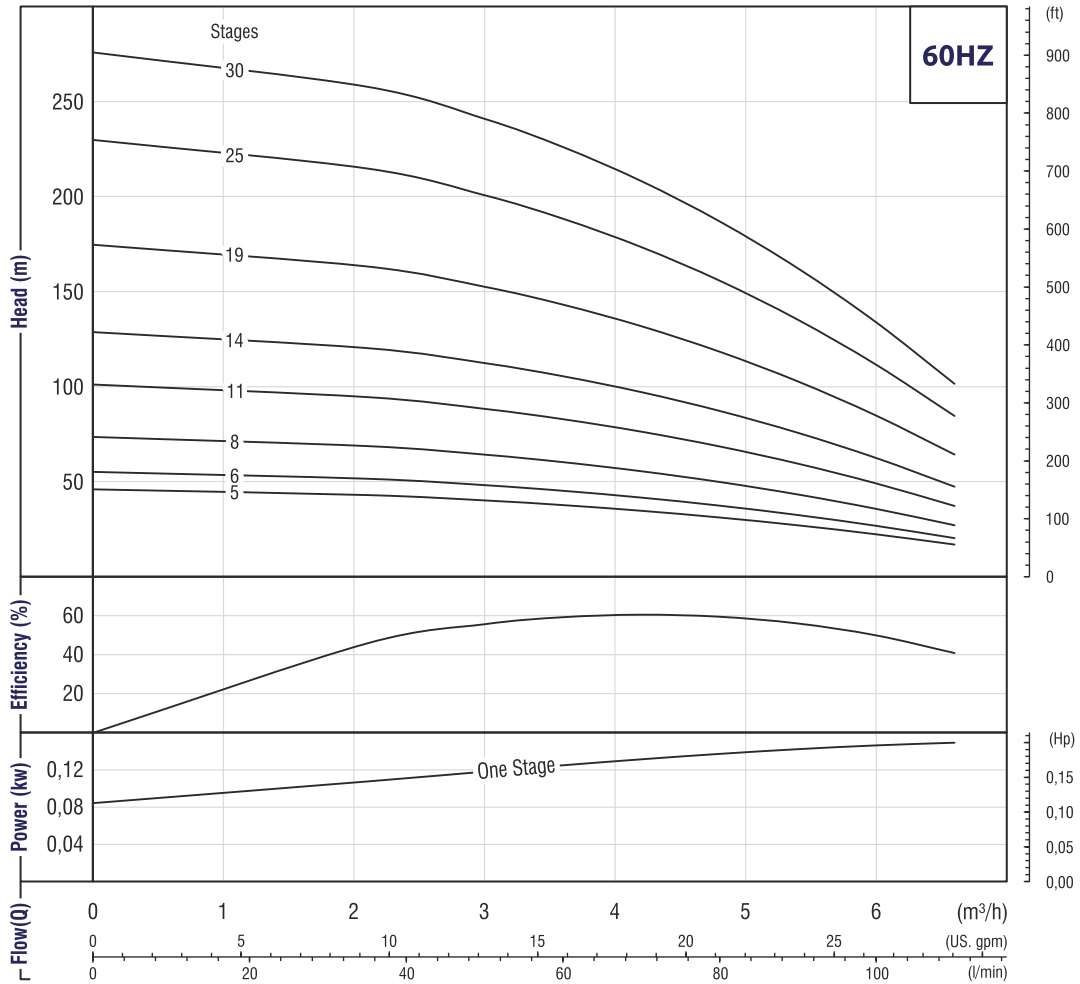
Technical Data

Pump Code	Stage	Motor Power		Length mm	Weight kg	m³/h l/min	0	1,2	2,1	2,7	3,0	3,6	4,2	4,5	4,8
		HP	kW				0	20	35	45	50	60	70	75	80
				Head (m)											
95 RN 03 / 05	5	0,5	0,37	231	2,6	Head (m)	49	48	45	41	39	34	28	25	21
95 RN 03 / 07	7	0,75	0,55	266	2,9		68	67	62	58	55	48	40	35	29
95 RN 03 / 10	10	1	0,75	318	3,3		95	93	87	81	77	67	54	47	40
95 RN 03 / 12	12	1,5	1,1	352	3,6		115	112	105	97	92	81	66	58	48
95 RN 03 / 17	17	2	1,5	438	4,4		163	159	149	138	131	114	93	81	69
95 RN 03 / 21	21	3	2,2	509	5,2		201	196	183	170	161	140	115	100	84
95 RN 03 / 28	28	4	3	665	6,2		269	263	246	227	216	188	154	135	113
95 RN 03 / 35	35	5	3,7	824	8,9		336	329	308	285	271	236	193	169	142

95 RN 04

4 Inch Submersible Pumps (60 Hz)

7 Vanes / 2900 Rpm (CCW) / 98mm Diameter / BSP - NPT 1 1/4" Outlet Connection Diameter / 11 mm Shaft Diameter



Due to continuous improvement in design we reserve the right to amend specifications or data without prior notice.

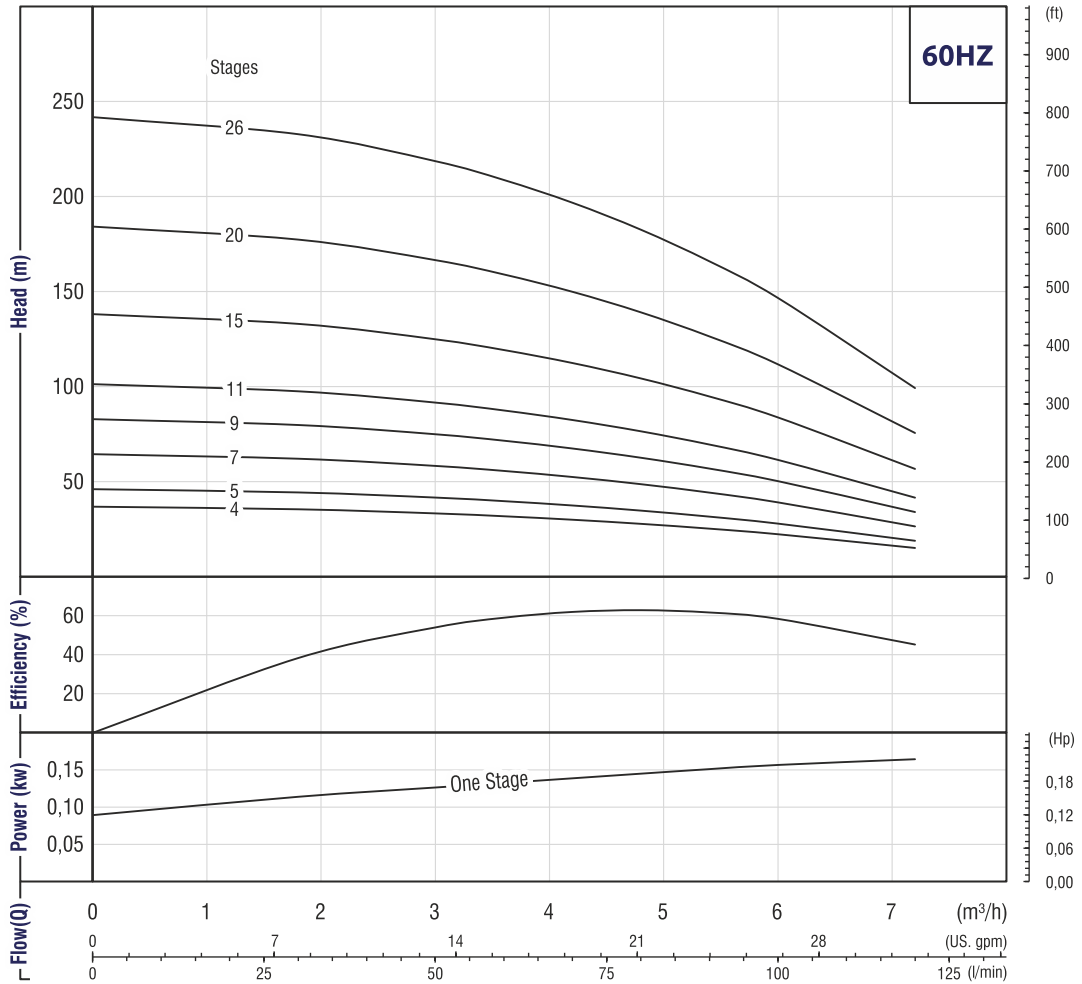
Technical Data

Pump Code	Stage	Motor Power		Length mm	Weight kg	m³/h l/min	Head (m)								
		HP	kW				0	2,1	3,0	3,6	4,2	4,8	5,4	6,0	6,6
95 RN 04 / 05	5	0,5	0,37	257	2,8	47	44	41	39	36	32	28	23	18	
95 RN 04 / 06	6	0,75	0,55	279	2,9	57	53	50	47	43	39	34	28	22	
95 RN 04 / 08	8	1	0,75	322	3,2	74	69	64	60	55	50	43	36	27	
95 RN 04 / 11	11	1,5	1,1	387	3,7	102	95	89	83	77	69	60	50	38	
95 RN 04 / 14	14	2	1,5	462	4,2	129	121	113	106	98	88	77	63	48	
95 RN 04 / 19	19	3	2,2	560	5,0	175	164	153	144	132	119	103	85	65	
95 RN 04 / 25	25	4	3	763	7,1	231	216	202	190	175	157	137	113	86	
95 RN 04 / 30	30	5	3,7	865	8,3	278	260	243	229	211	190	165	136	104	

95 RN 05

4 Inch Submersible Pumps (60 Hz)

7 Vanes / 2900 Rpm (CCW) / 98mm Diameter / BSP - NPT 1 1/4" Outlet Connection Diameter / 11 mm Shaft Diameter



Due to continuous improvement in design we reserve the right to amend specifications or data without prior notice.

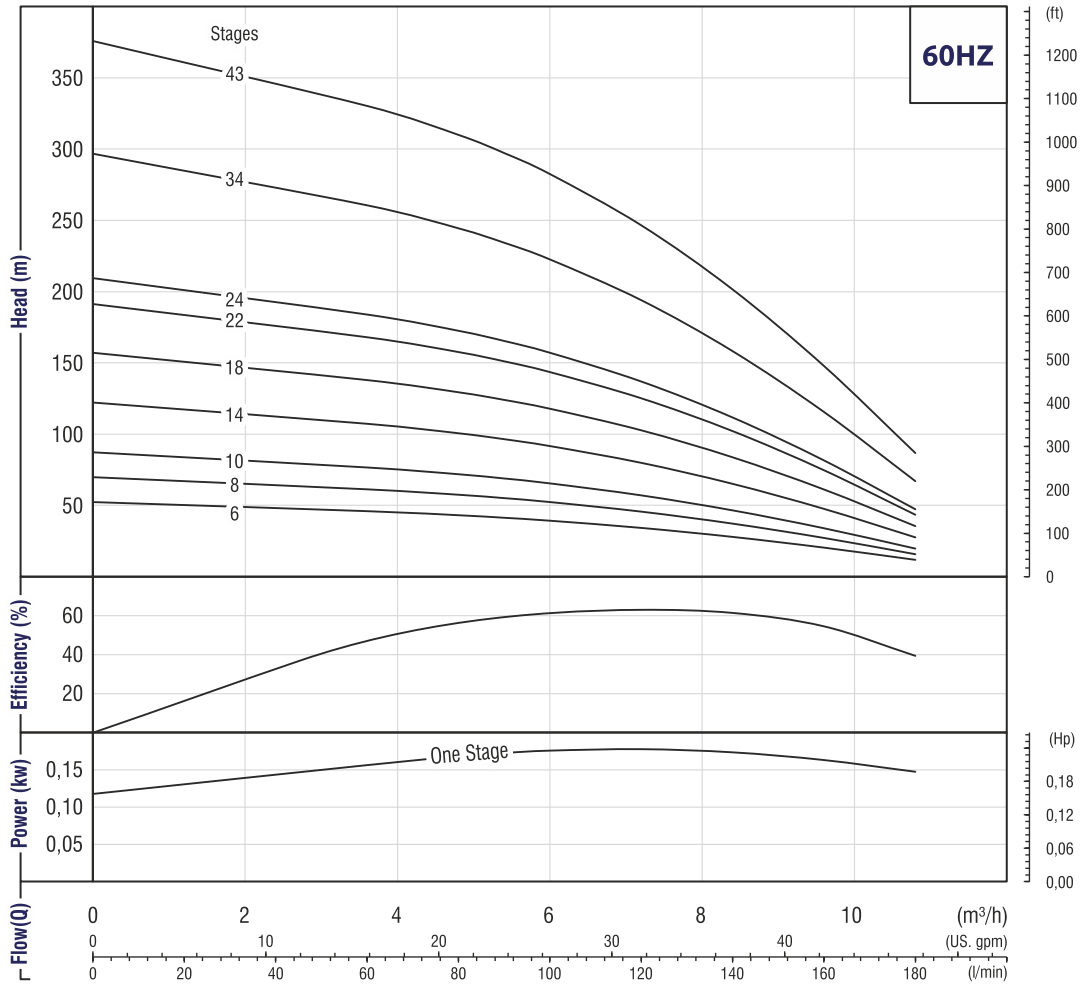
Technical Data

Pump Code	Stage	Motor Power		Length mm	Weight kg	m³/h l/min	0	1,8	3,0	3,6	4,2	4,8	5,4	6,0	7,2
		HP	kW				0	30	50	60	70	80	90	100	120
				Head (m)											
95 RN 05 /04	4	0,5	0,37	249	2,5	Head (m)	38	36	34	33	31	29	26	23	16
95 RN 05 /05	5	0,75	0,55	275	2,7		47	46	43	41	39	36	33	29	20
95 RN 05 /07	7	1	0,75	323	3,2		64	62	58	56	52	49	44	39	26
95 RN 05 /09	9	1,5	1,1	374	3,6		83	80	76	72	68	63	57	51	35
95 RN 05 /11	11	2	1,5	423	4,1		102	98	92	88	83	77	70	62	42
95 RN 05 /15	15	3	2,2	523	4,9		139	133	125	120	113	105	95	84	57
95 RN 05 /20	20	4	3	686	6,0		186	179	168	161	152	141	128	113	77
95 RN 05 /26	26	5	3,7	873	8,4		239	232	217	209	198	183	165	146	99

95 RN 06

4 Inch Submersible Pumps (60 Hz)

6 Vanes / 2900 Rpm (CCW) / 98mm Diameter / BSP - NPT 2" Outlet Connection Diameter / 11 mm Shaft Diameter



Due to continuous improvement in design we reserve the right to amend specifications or data without prior notice.

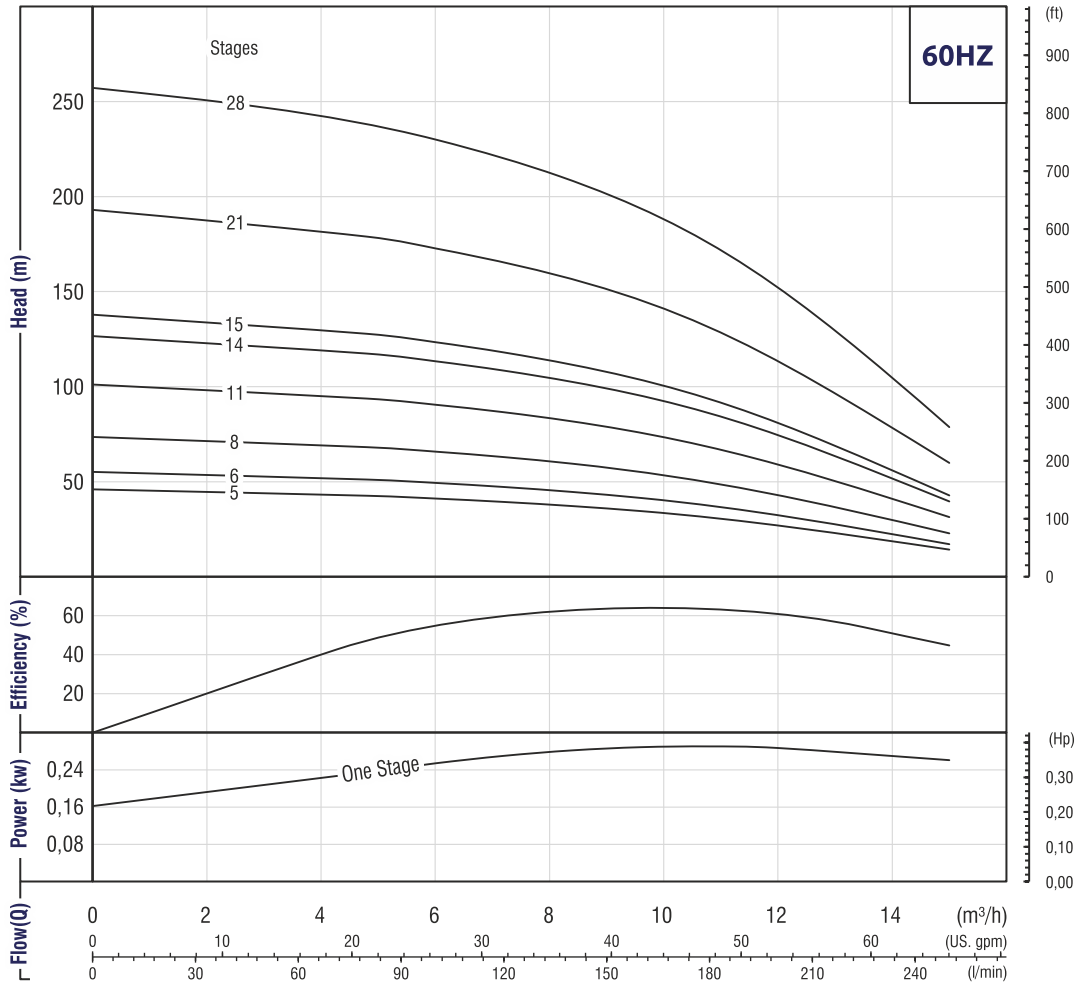
Technical Data

Pump Code	Stage	Motor Power		Length mm	Weight kg	m³/h l/min	0	3,6	4,8	5,4	6,0	7,2	8,4	9,6	10,8
		HP	kW				0	60	80	90	100	120	140	160	180
95 RN 06 / 06	6	1	0,75	363	3,6	Head (m)	53	47	44	42	40	35	29	21	13
95 RN 06 / 08	8	1,5	1,1	425	4,2		71	63	59	57	54	47	39	29	17
95 RN 06 / 10	10	2	1,5	488	4,8		87	77	72	69	65	57	47	34	20
95 RN 06 / 14	14	3	2,2	613	6,0		123	108	101	97	92	80	66	48	28
95 RN 06 / 18	18	4	3	738	7,2		158	139	130	125	119	103	85	62	36
95 RN 06 / 22	22	5	3,7	902	8,5		192	169	159	152	144	126	103	75	44
95 RN 06 / 24	24	5,5	4	1003	10,2		211	185	174	167	159	139	113	83	49
95 RN 06 / 34	34	7,5	5,5	1308	13,2		298	262	246	236	224	196	160	117	69
95 RN 06 / 43	43	10	7,5	1370	16,0		376	331	310	298	283	247	201	148	86

95 RN 08

4 Inch Submersible Pumps (60 Hz)

7 Vanes / 2900 Rpm (CCW) / 98mm Diameter / BSP - NPT 2" Outlet Connection Diameter / 11 mm Shaft Diameter



Due to continuous improvement in design we reserve the right to amend specifications or data without prior notice.

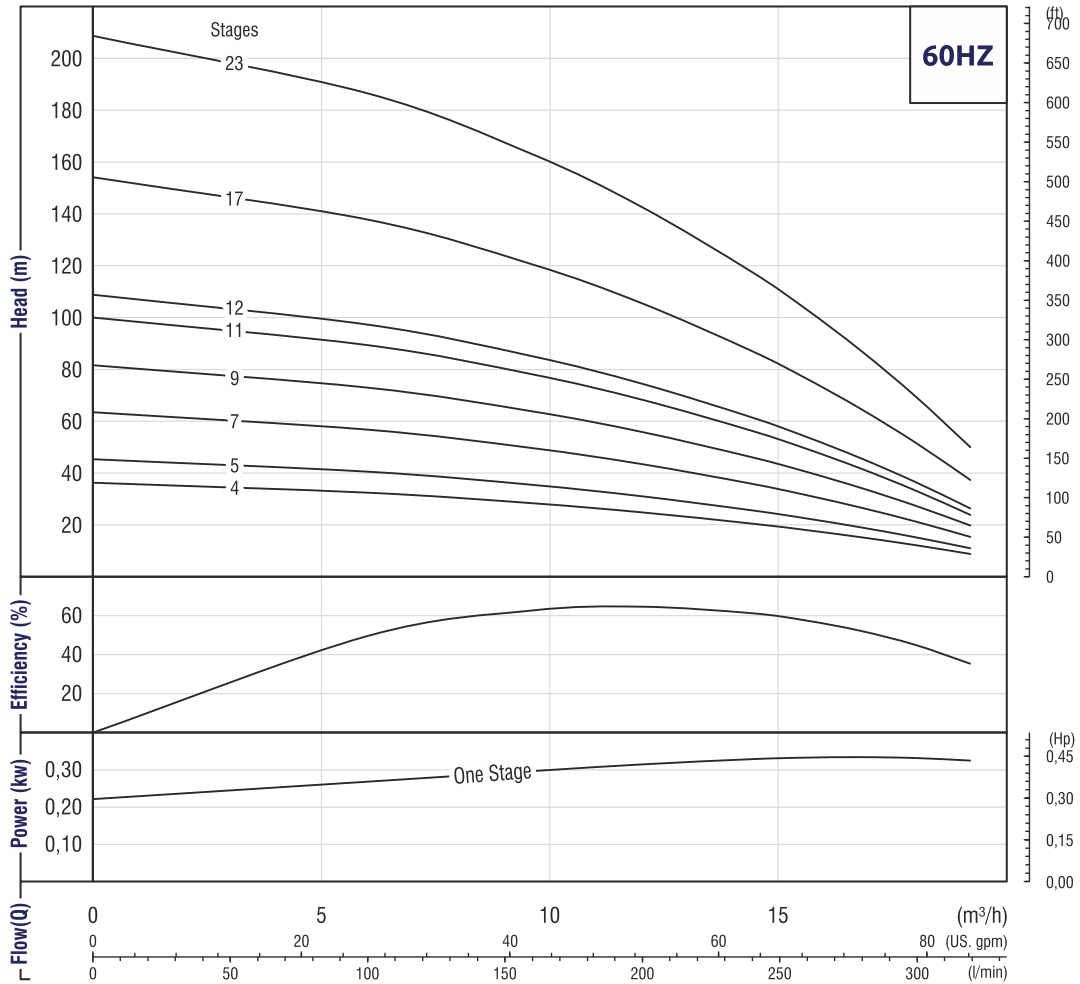
Technical Data

Pump Code	Stage	Motor Power		Length mm	Weight kg	m³/h l/min	Head (m)								
		HP	kW				0	4,8	6,0	7,2	8,4	9,6	10,8	12,0	15,0
				0	80		100	120	140	160	180	200	250		
95 RN 08 / 05	5	1,5	1,1	328	3,3	Head (m)	47	43	41	40	38	35	32	28	15
95 RN 08 / 06	6	2	1,5	362	3,6		56	52	50	48	45	42	38	34	18
95 RN 08 / 08	8	3	2,2	422	4,3		74	68	66	63	59	55	50	44	23
95 RN 08 / 11	11	4	3	516	5,2		101	94	91	87	82	76	69	61	32
95 RN 08 / 14	14	5	3,7	610	6,1		129	120	116	111	105	97	89	78	41
95 RN 08 / 15	15	5,5	4	644	6,4		138	128	124	118	112	104	94	83	43
95 RN 08 / 21	21	7,5	5,5	868	8,3		194	180	174	166	157	146	133	117	61
95 RN 08 / 28	28	10	7,5	1.146	11,6		258	239	231	221	209	194	176	155	81

95 RN 12

4 Inch Submersible Pumps (60 Hz)

6 Vanes / 2900 Rpm (CCW) / 98mm Diameter / BSP - NPT 2" Outlet Connection Diameter / 11 mm Shaft Diameter



Due to continuous improvement in design we reserve the right to amend specifications or data without prior notice.

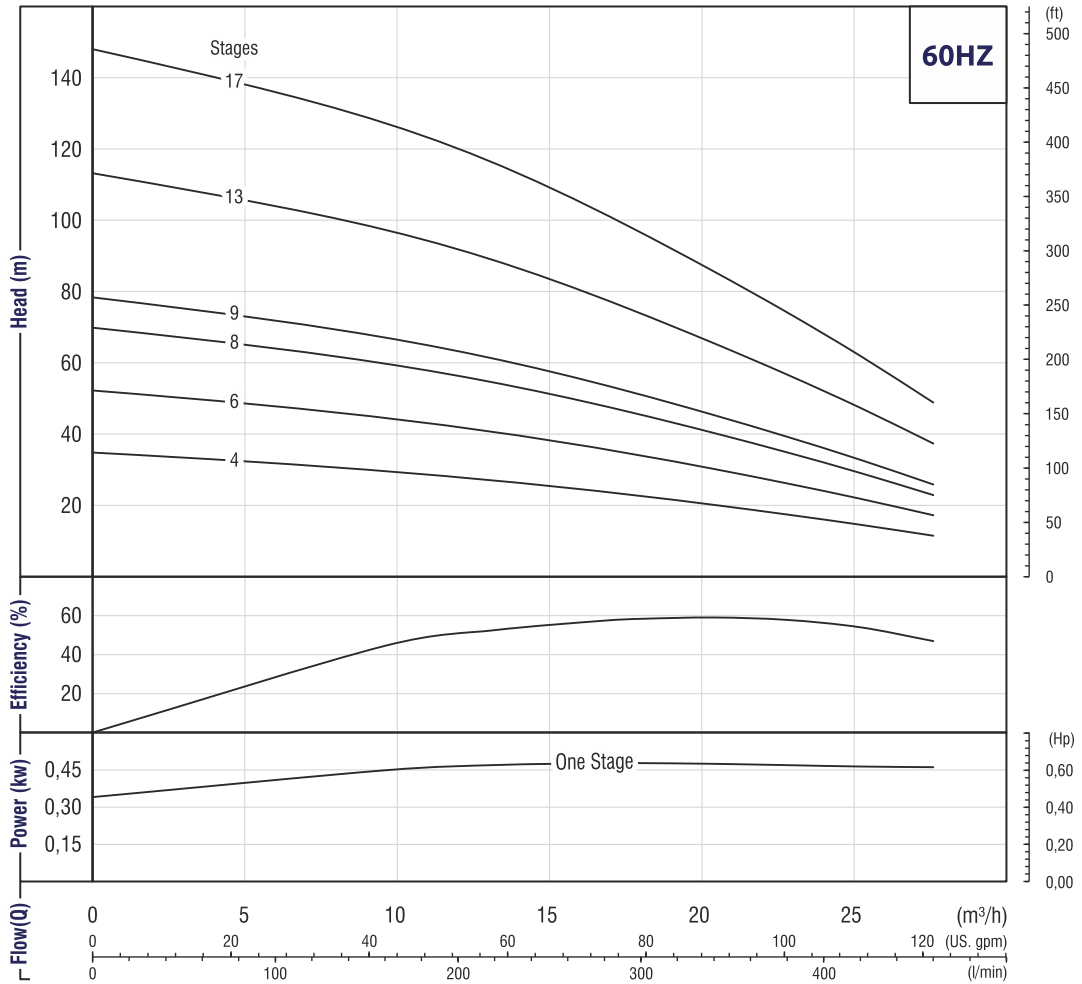
Technical Data

Pump Code	Stage	Motor Power		Length mm	Weight kg	m³/h l/min	Head (m)									
		HP	kW				0	6,0	9,6	12,0	14,4	15,6	16,8	18,0	19,2	
95 RN 12 /04	4	1,5	1,1	389	4,2		37	33	29	25	21	19	16	13	9	
95 RN 12 /05	5	2	1,5	443	4,8		46	41	36	32	26	23	20	16	12	
95 RN 12 /07	7	3	2,2	550	5,7		63	57	50	43	36	32	27	21	15	
95 RN 12 /09	9	4	3	657	6,8		82	73	64	56	47	41	35	28	20	
95 RN 12 /11	11	5	3,7	764	7,8		101	90	79	69	57	50	43	34	25	
95 RN 12 /12	12	5,5	4	821	8,3		109	98	86	75	62	54	46	37	27	
95 RN 12 /17	17	7,5	5,5	1.125	10,9		155	139	122	107	88	78	66	53	39	
95 RN 12 /23	23	10	7,5	1.493	15,3		209	187	164	142	119	104	89	71	50	

95 RN 16

4 Inch Submersible Pumps (60 Hz)

6 Vanes / 2900 Rpm (CCW) / 98mm Diameter / BSP - NPT 2" Outlet Connection Diameter / 11 mm Shaft Diameter



Due to continuous improvement in design we reserve the right to amend specifications or data without prior notice.

Technical Data

Pump Code	Stage	Motor Power		Length mm	Weight kg	m³/h l/min	Head (m)								
		HP	kW				0	9,6	13,2	16,8	18,0	20,4	22,8	25,2	27,6
				0	160		220	280	300	340	380	420	460		
95 RN 16 / 04	4	3	2,2	408	3,9	Head (m)	35	31	28	25	23	21	18	15	12
95 RN 16 / 06	6	4	3	545	5,2		53	47	42	37	35	31	27	23	18
95 RN 16 / 08	8	5	3,7	683	6,5		70	61	55	48	45	40	35	29	23
95 RN 16 / 09	9	5,5	4	750	7,1		79	69	62	54	51	46	40	33	26
95 RN 16 / 13	13	7,5	5,5	1.023	9,6		114	100	90	79	75	66	58	48	38
95 RN 16 / 17	17	10	7,5	1.298	12,1		148	131	117	102	97	86	75	62	49



Water Systems



info@ravelliwatersystems.com / www.ravelliwatersystems.com